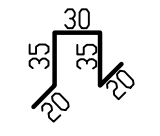
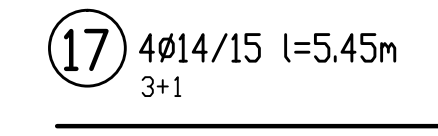
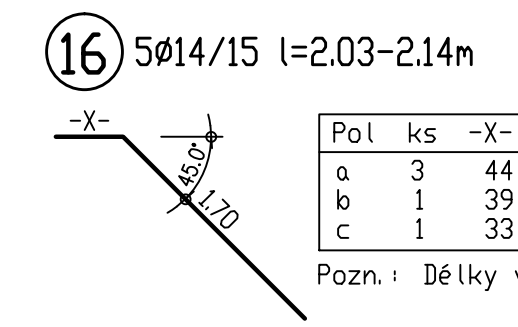


Figure 10 consists of two diagrams illustrating the layout of a 100' x 14' rectangular area. The left diagram shows a horizontal line of 107' and a vertical line of 77'. A 1.07' offset is indicated from the horizontal line to a point on the vertical line. A 135.0° angle is shown between the horizontal line and the vertical line. The right diagram shows a horizontal line of 1.09' and a vertical line of 77'. A 1.35' offset is indicated from the horizontal line to a point on the vertical line. A 135.0° angle is shown between the horizontal line and the vertical line. Both diagrams include a 20' offset from the vertical line to a point on the horizontal line.

VÝPIS VÝZTUŽE				
Pol	pr mm	ks	délka m	
1	14	3	4,24	12,72
2	14	18	viz výk	46,44
3	14	3	4,09	12,27
4	14	18	viz výk	44,66
5	14	3	2,10	6,30
6	14	8	viz výk	21,68
7	14	10	1,48	14,80
8	14	10	1,84	18,40
9	14	5	1,29	6,45
10	14	5	1,29	6,45
11	14	25	viz výk	58,56
12	14	25	viz výk	64,84
13	14	6	viz výk	10,64
14	14	25	1,89	47,25
15	14	1	4,38	4,38
16	14	5	viz výk	10,54
17	14	4	5,45	21,80
18	18	9	2,20	19,80
	pr	kg/m	Celk. délka (m)	Hmotnost(kg)
	14	1,210	408,23	494,0
	18	2,000	19,80	39,6
CELK. HMOTNOST =				533,6 kg



VÝŠKOVÝ SYSTÉM : BALT p.v.
KÓTOVÁNO V [cm]

